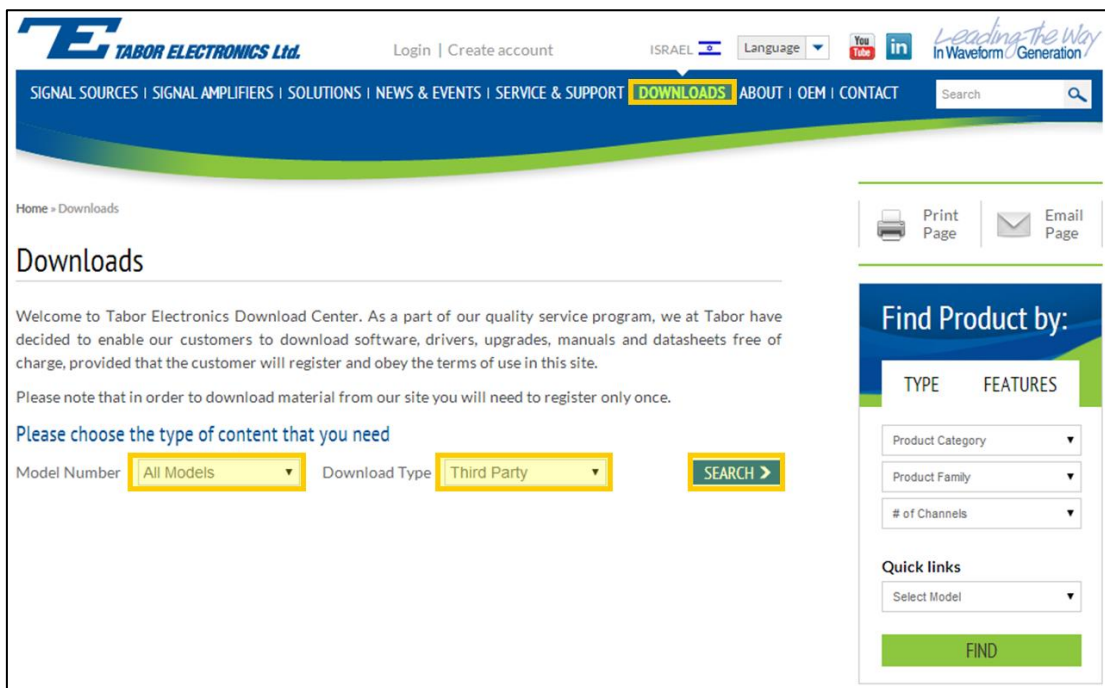


## How to Simply Install and Connect to ArbConnection

This document contains instructions on how to simply install and connect to ArbConnection – Tabor’s comprehensive, PC-based software tool that controls instrument operation, and provides unsurpassed programming and waveform creation capabilities.

➔ **To install ArbConnection on your PC and connect it to your Tabor device:**

1. To begin, you’ll need to download the ArbConnection and NI-VISA software. To perform the download, access the Tabor Electronics web site at <http://www.taborelec.com/downloads>.
2. First, download and install the NI-VISA software. Click on the **Downloads** menu entry, select the model from the **Model Number** drop-down box, and select “Third Party” from the **Download Type** drop-down box. Click on the **Search** button.

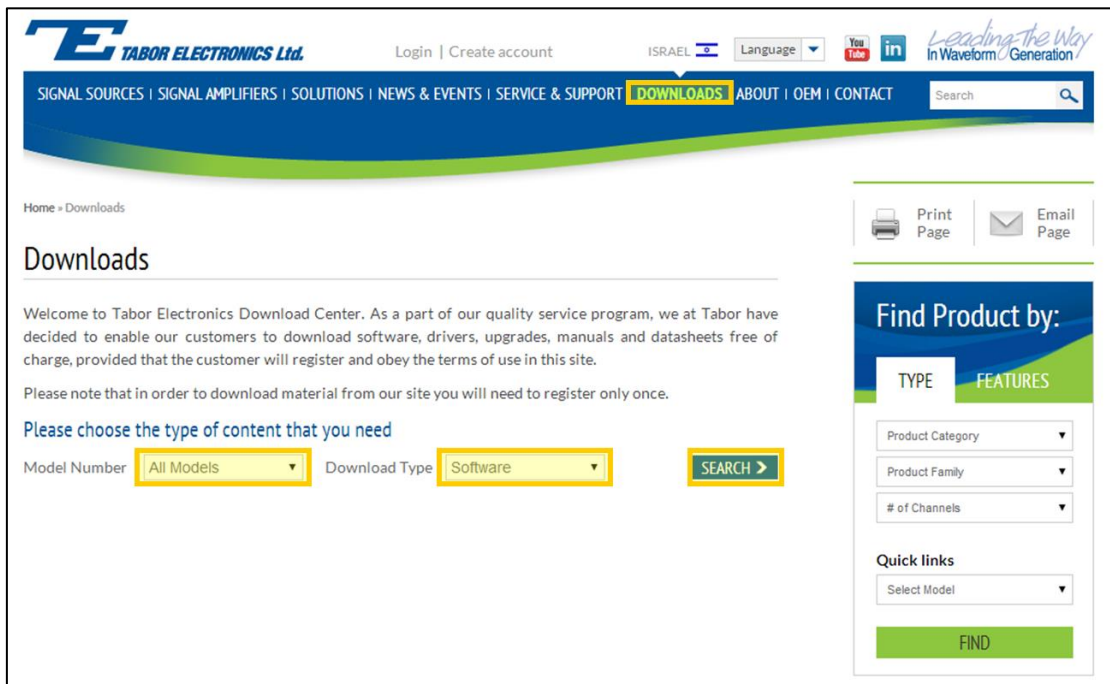


The screenshot shows the Tabor Electronics website's 'Downloads' section. The header includes the company logo, navigation links (Login, Create account, ISRAEL, Language), and social media icons. The main navigation bar highlights 'DOWNLOADS'. The page content includes a welcome message, a registration notice, and a search form. The search form has two dropdown menus: 'Model Number' (set to 'All Models') and 'Download Type' (set to 'Third Party'), followed by a 'SEARCH' button. On the right, there are links for 'Print Page' and 'Email Page', and a 'Find Product by:' section with dropdowns for 'Product Category', 'Product Family', and '# of Channels', along with a 'Quick links' dropdown and a 'FIND' button.

3. Download the NI-VISA runtime software.

Third Party	NI-VISA Software(Runtime)	10/07/2008 Ver. 4.4.1	 <a href="#">Download (34.9 Mb)</a>
-------------	---------------------------	--------------------------	--------------------------------------------------------------------------------------------------------------------------

4. Install the NI-VISA runtime software on your PC. Execute the installation file that you downloaded and follow the instructions provided in the installation software.
5. To download ArbConnection from the web site, return to **Downloads**, select your device's model number from the **Model Number** drop-down box, and select "Software" from the **Download Type** drop-down box. Click on the **Search** button.



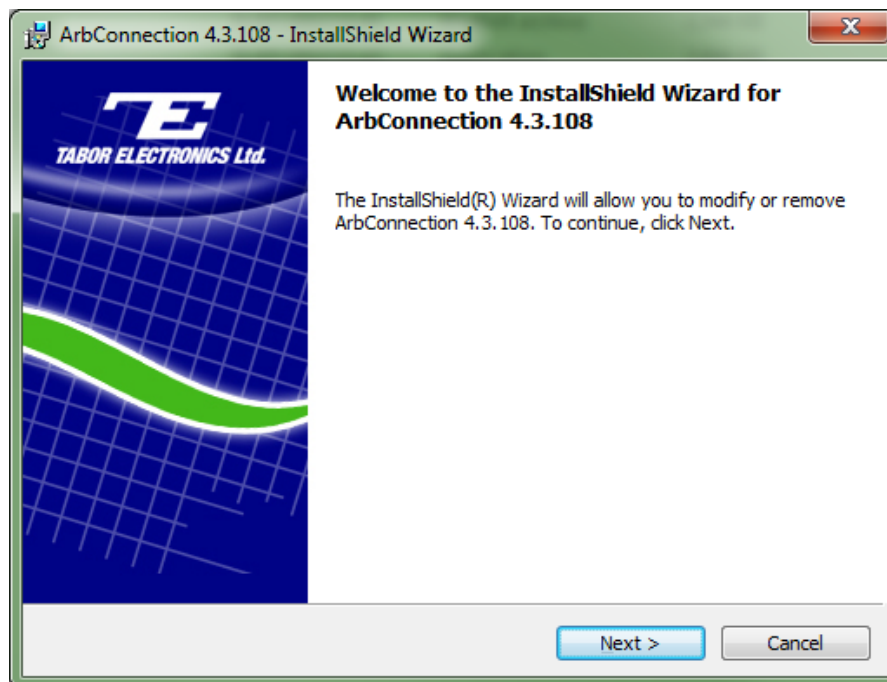
The screenshot shows the Tabor Electronics website's 'Downloads' section. The header includes the company logo, navigation links (SIGNAL SOURCES, SIGNAL AMPLIFIERS, SOLUTIONS, NEWS & EVENTS, SERVICE & SUPPORT, **DOWNLOADS**, ABOUT, OEM, CONTACT), and a search bar. The main content area is titled 'Downloads' and contains a welcome message and a registration notice. Below this, there is a section titled 'Please choose the type of content that you need' with two dropdown menus: 'Model Number' (set to 'All Models') and 'Download Type' (set to 'Software'). A 'SEARCH >' button is next to these menus. On the right side, there is a 'Find Product by:' section with filters for 'TYPE' and 'FEATURES', including dropdowns for 'Product Category', 'Product Family', and '# of Channels'. There is also a 'Quick links' section with a 'Select Model' dropdown and a 'FIND' button.

6. **Download** the ArbConnection software tool.

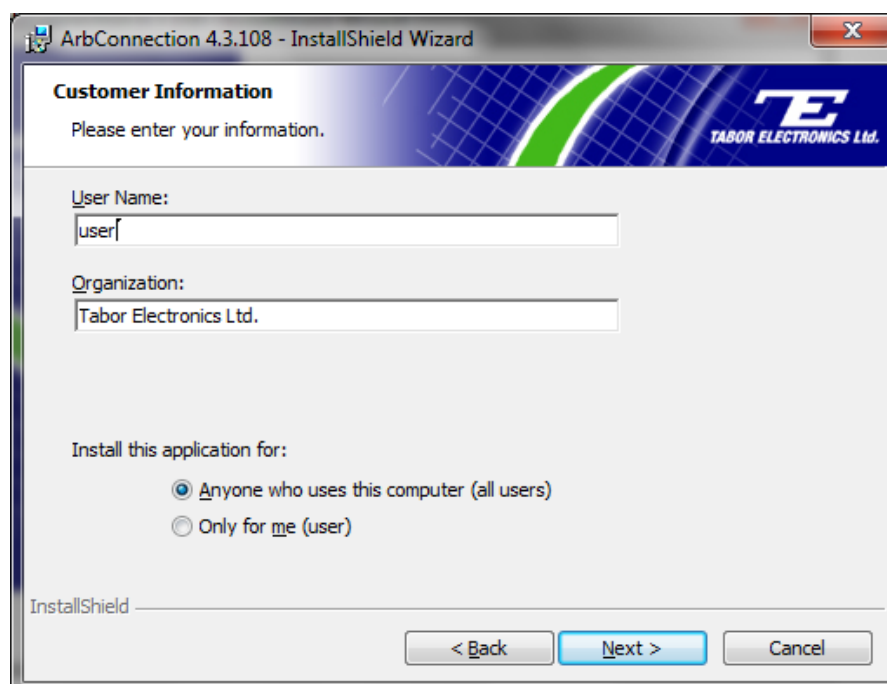
### ArbConnection

Software	ArbConnection 4.3- Windows 7 Compatible	06/08/2013	Download (10.4 Mb)
		Ver. 4.3.108	

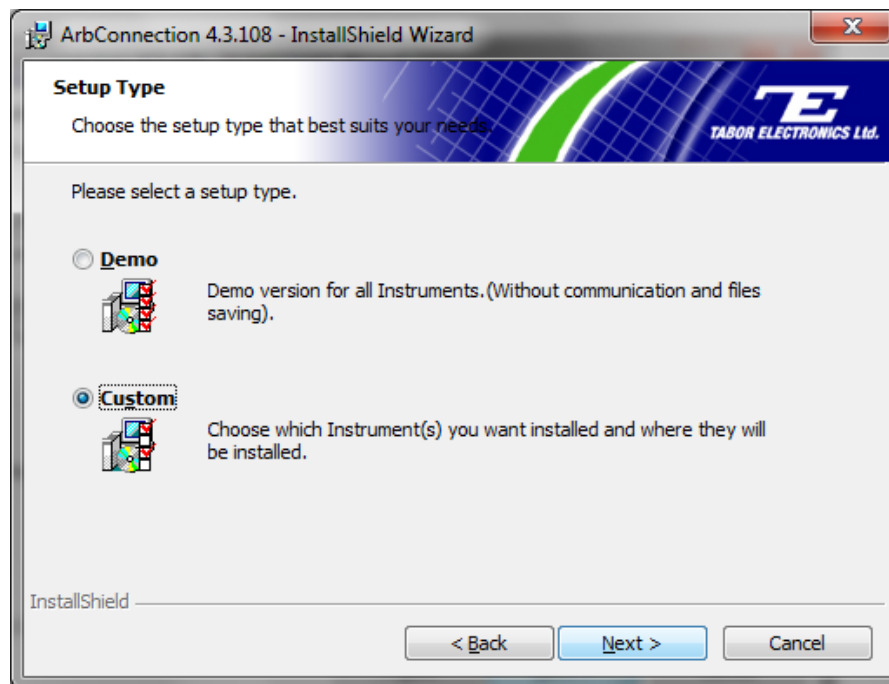
7. Execute the ArbConnection installation file that you downloaded and click **Next** in the Welcome window.



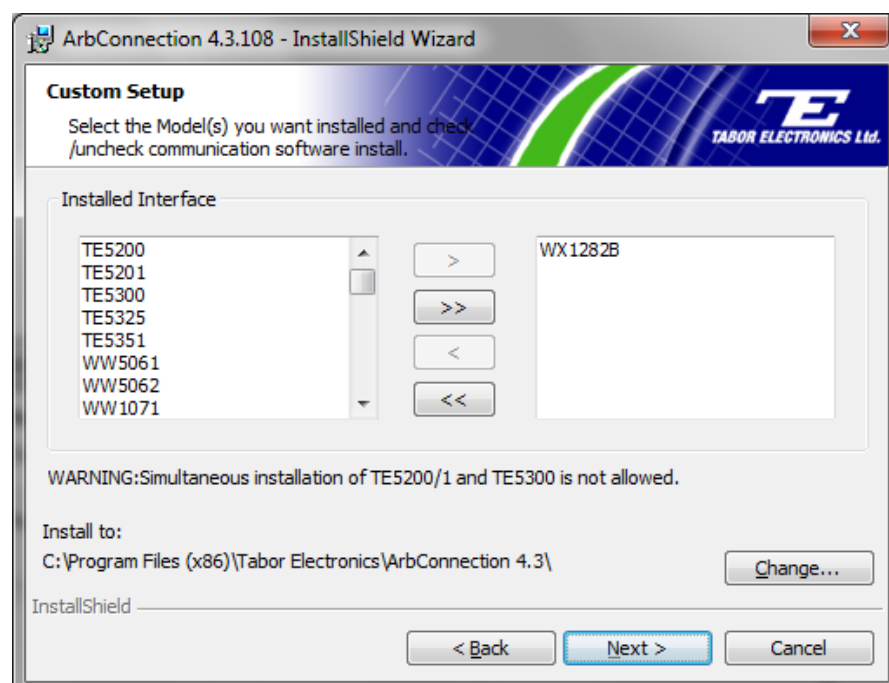
8. Enter your user information in the **User Name** and **Organization** fields. Select the installation option **Anyone who uses this computer (all users)**, and click **Next**.



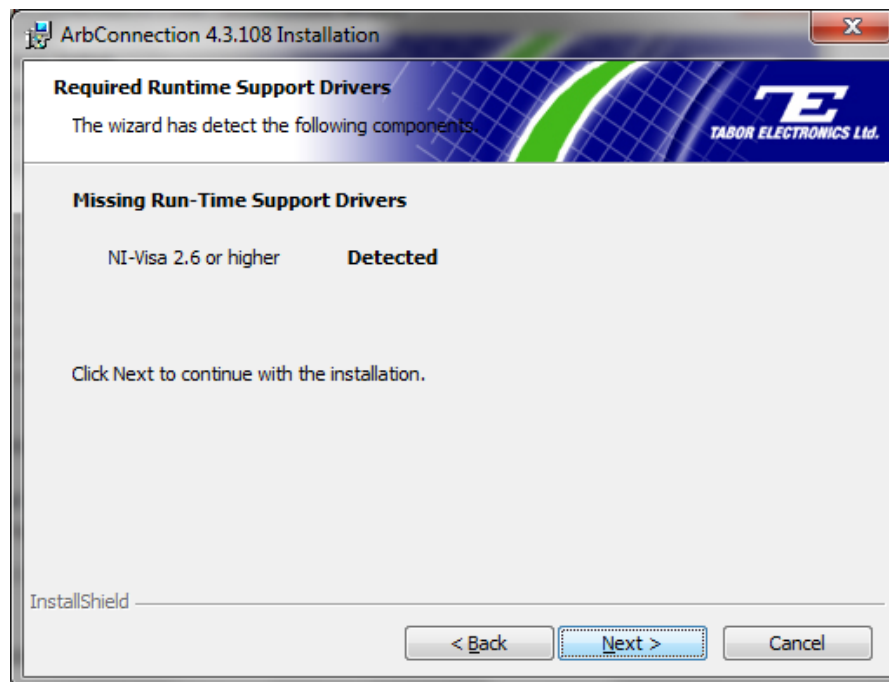
9. Select a **Custom** setup, and click **Next**.



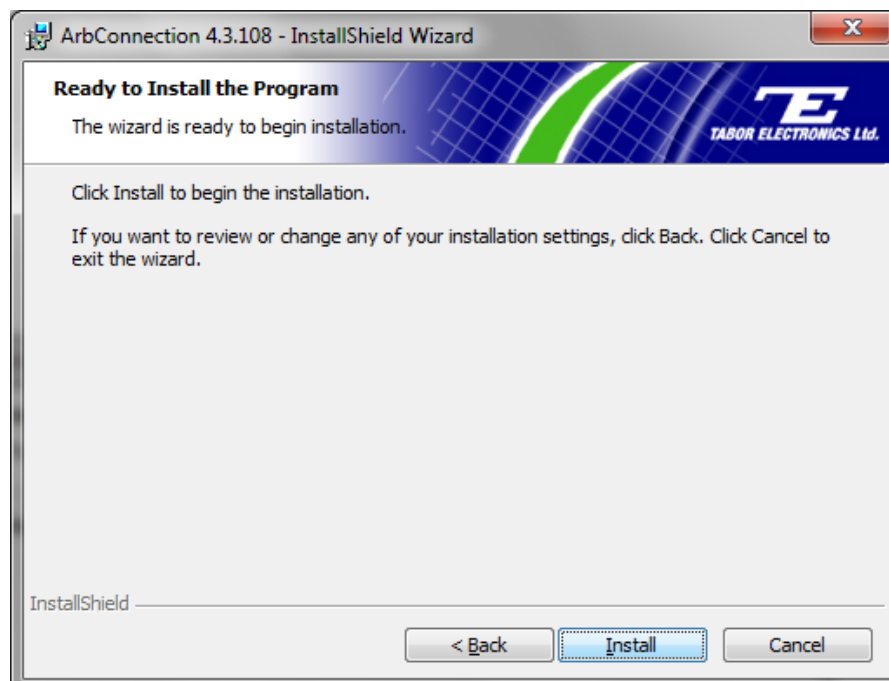
10. Select your Tabor device's model number from the **Installed Interface** list, and click on the **right arrow button** (">") to display the number in the right-hand list box. Click **Next** to continue.



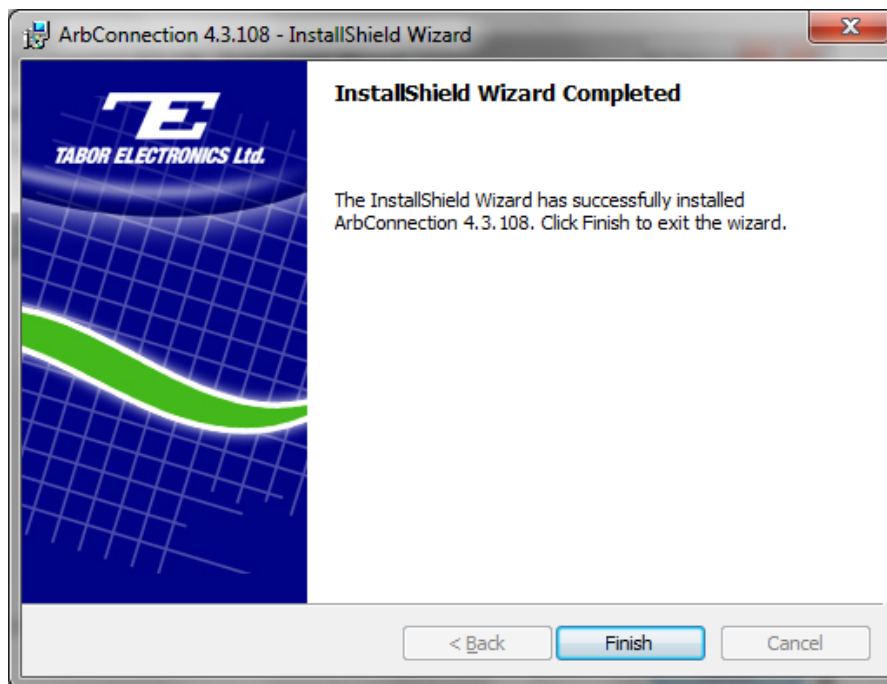
11. The next window should inform you that the NI-Visa driver has been “Detected”. Click **Next** to continue.



12. Click **Install** to proceed with the installation.

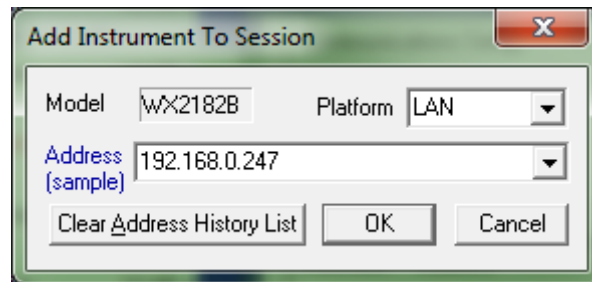


13. Upon completion of the installation, click on the **Finish** button.



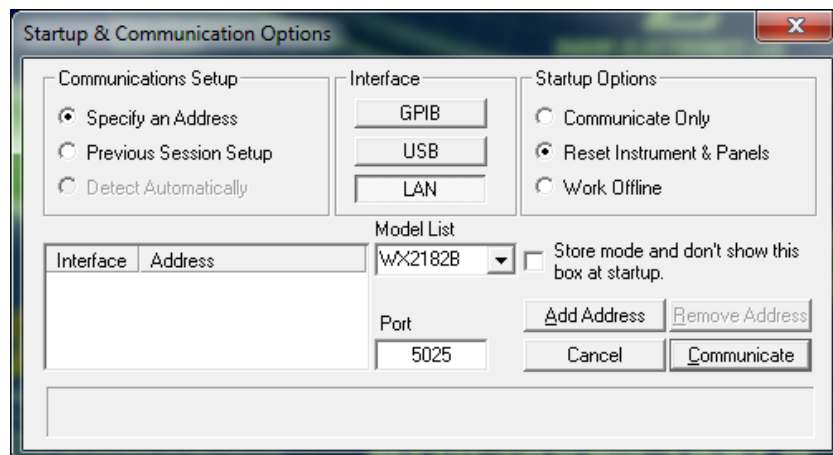
14. Connect the PC to the Tabor device using a USB, GPIB, or LAN cable. For detailed instructions on connecting your Tabor device to a PC, please review one of the following documents:
- *How to Simply Connect WW, WS & PM Series via USB*
  - *How to Simply Connect WX, WS & PM-A Series via USB*
  - *How to Simply Connect Tabor Units via GPIB/LAN*
15. Double-click on the ArbConnection icon on the PC desktop to execute the software.
16. Click on the **Interface** button that matches the type of connection to be used. Choose your device model number from the **Model List** box. Then click on the **Add Address** button to specify the address of the device.

- If using a **USB** interface, select the **Detect Automatically** radio button from **Communications Setup**.
- If using a **LAN** or GPIB interface, select the **Specify an Address** radio button from **Communications Setup**. Click on the **Add Address** button, and a new pop up window will appear, enter the platform and address details.



- If using a LAN interface, verify that the following TCP/UDP port information is entered:
  - For all WX models, WS8351, and WS8352: Port 5025
  - For all other models: Port 23

Click on the **Communicate** button to begin the ArbConnection session.



## For More Information

To learn more about Tabor's solutions or to schedule a demo, please contact your local Tabor representative or email your request to [info@tabor.co.il](mailto:info@tabor.co.il). More information can be found at our website at [www.taborelec.com](http://www.taborelec.com)

© Proprietary of Tabor Electronics Ltd.